

SCHEDULE OF SIGNS

| | | | | | |
|----|--|---|----|--|----------------|
| 1 | | M3-1(O)-2412 | 17 | | M4-10R-4818 |
| 2 | | M3-3(O)-2412 | 18 | | R11-3A(O)-6030 |
| 3 | | SPECIAL 5" BLACK LETTERS ON FLUORESCENT ORANGE BACKGROUND | | | |
| 4 | | M4-9(O)-3024 | | | |
| 5 | | M4-9L(O)-3024 | | | |
| 6 | | M4-9R(O)-3024 | | | |
| 7 | | M4-9L(O)-3024 | | | |
| 8 | | M4-9R(O)-3024 | | | |
| 9 | | M4-8A(O)-2418 | | | |
| 10 | | SPECIAL-4836 4" BLACK LETTERS ON FLUORESCENT ORANGE BACKGROUND | | | |
| 11 | | SPECIAL-4836 4" BLACK LETTERS ON FLUORESCENT ORANGE BACKGROUND | | | |
| 12 | | W20-3(O)-4848 | | | |
| 13 | | W20-2(O)-4848 | | | |
| 14 | | W20-3(O)-4848 | | | |
| 15 | | R11-4(O)-6030 | | | |
| 16 | | SPECIAL-3636 BLACK IN FLUORESCENT ORANGE | | | |

LEGEND

- DETOUR ROUTE
- ROAD CLOSURE
- SIGNALIZED INTERSECTION
- CONSTRUCTION WARNING SIGN WITH AMBER FLASHING LIGHT, NUMBER DENOTES TYPE
- M4-9 SERIES DETOUR SIGN WITH ROAD NAME AND DIRECTION PLATES, NUMBER DENOTES TYPE
- OTHER DETOUR SIGNS, NUMBER DENOTES TYPE

NOTES

- DETOUR SIGNING SHALL BE INCLUDED IN THE COST OF "TRAFFIC CONTROL AND PROTECTION, (SPECIAL)"
- ALL DETOUR SIGN SPACING SHALL BE IN ACCORDANCE WITH IDOT DISTRICT 1 DETAIL TC-21.
- THE PAY ITEM "TEMPORARY TRAFFIC SIGNAL TIMING" SHALL BE INCLUDED FOR EACH SIGNALIZED INTERSECTIONS ALONG THE PROPOSED DETOUR ROUTE.

MODEL: Default
FILE NAME: C:\303b324 - US Rte 20 Roundabout\CAD\Sheets\08_mtr_detour.dgn



| | | | |
|------------|-----------|-----------|--|
| DESIGNED - | TGB | REVISED - | |
| DRAWN - | KEH | REVISED - | |
| CHECKED - | RTM | REVISED - | |
| DATE | 2/14/2024 | REVISED - | |

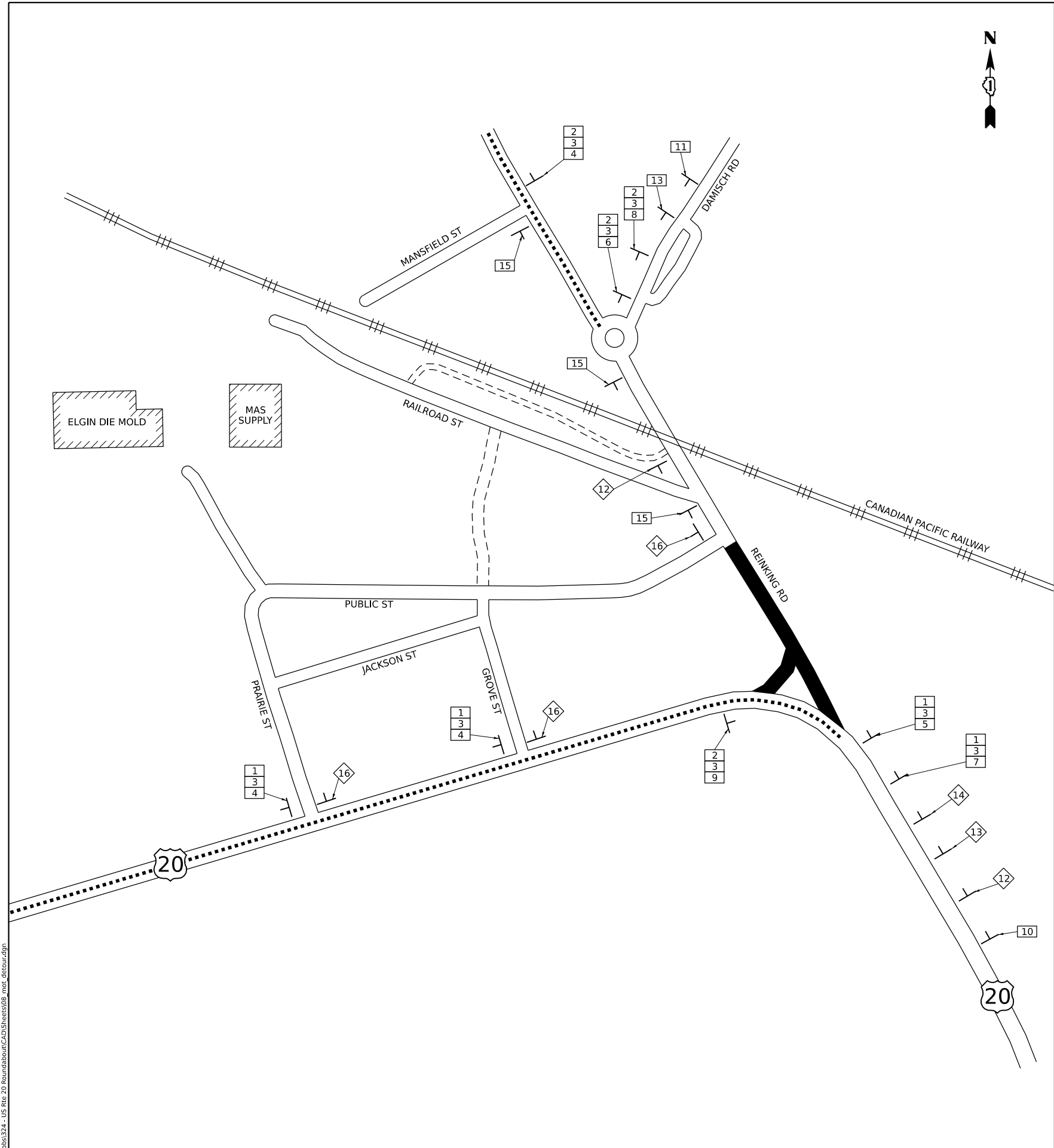
STATE OF ILLINOIS
DEPARTMENT OF TRANSPORTATION

DETOUR PLAN
STAGE 1

SHEET 1 OF 3 SHEETS STA. TO STA.

| | | | | |
|------------------------------------|---------------------------|------------------|------------------------|--------------------|
| F.A.P./ F.A.U. 345A/ 2340 | SECTION 19-00187-00-CH | COUNTY KANE | TOTAL SHEETS 115 | SHEET NO. 45 |
| CONTRACT NO. 61J28 | | | | |
| FED. ROAD DIST. NO. 1 | ILLINOIS | FED. AID PROJECT | | |

MODEL: Default
FILE NAME: C:\303b324 - US Rte 20 Roundabout\CAD\Sheets\08_mor_detour.dgn



SCHEDULE OF SIGNS

| | | | | | |
|----|--|---|----|--|----------------|
| 1 | | M3-1(O)-2412 | 17 | | M4-10R-4818 |
| 2 | | M3-3(O)-2412 | 18 | | R11-3A(O)-6030 |
| 3 | | SPECIAL 5" BLACK LETTERS ON FLUORESCENT ORANGE BACKGROUND | | | |
| 4 | | M4-9(O)-3024 | | | |
| 5 | | M4-9L(O)-3024 | | | |
| 6 | | M4-9R(O)-3024 | | | |
| 7 | | M4-9L(O)-3024 | | | |
| 8 | | M4-9R(O)-3024 | | | |
| 9 | | M4-8A(O)-2418 | | | |
| 10 | | SPECIAL-4836 4" BLACK LETTERS ON FLUORESCENT ORANGE BACKGROUND | | | |
| 11 | | SPECIAL-4836 4" BLACK LETTERS ON FLUORESCENT ORANGE BACKGROUND | | | |
| 12 | | W20-3(O)-4848 | | | |
| 13 | | W20-2(O)-4848 | | | |
| 14 | | W20-3(O)-4848 | | | |
| 15 | | R11-4(O)-6030 | | | |
| 16 | | SPECIAL-3636 BLACK IN FLUORESCENT ORANGE | | | |

LEGEND

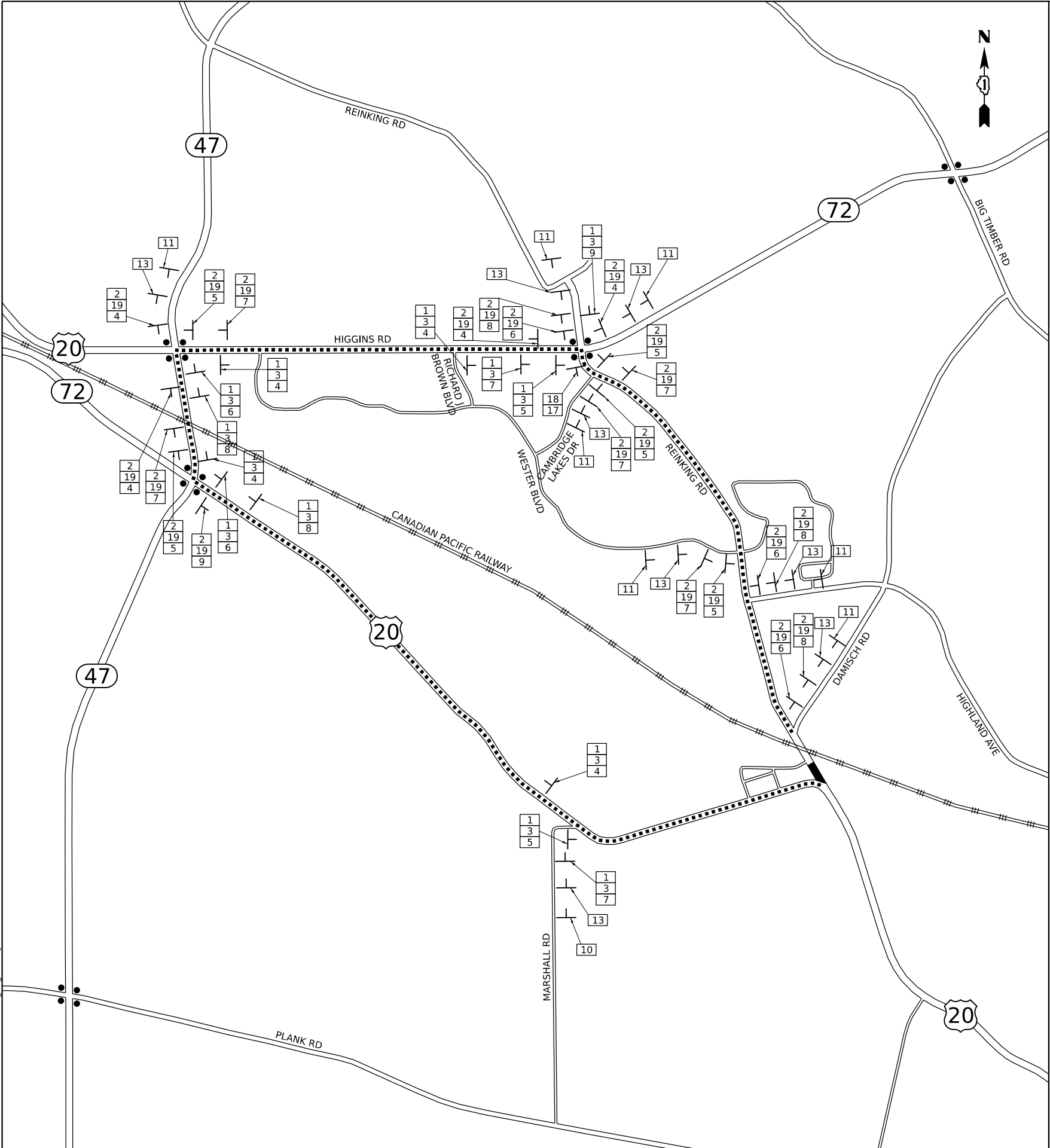
- DETOUR ROUTE
- ROAD CLOSURE
- SIGNALIZED INTERSECTION
- CONSTRUCTION WARNING SIGN
WITH AMBER FLASHING LIGHT,
NUMBER DENOTES TYPE
- M4-9 SERIES DETOUR SIGN WITH
ROAD NAME AND DIRECTION PLATES,
NUMBER DENOTES TYPE
- OTHER DETOUR SIGNS,
NUMBER DENOTES TYPE

NOTES

- DETOUR SIGNING SHALL BE INCLUDED IN THE COST OF "TRAFFIC CONTROL AND PROTECTION, (SPECIAL)"
- ALL DETOUR SIGN SPACING SHALL BE IN ACCORDANCE WITH IDOT DISTRICT 1 DETAIL TC-21.
- THE PAY ITEM "TEMPORARY TRAFFIC SIGNAL TIMING" SHALL BE INCLUDED FOR EACH SIGNALIZED INTERSECTIONS ALONG THE PROPOSED DETOUR ROUTE.

| | | | |
|------------|-----------|-----------|--|
| DESIGNED - | TGB | REVISED - | |
| DRAWN - | KEH | REVISED - | |
| CHECKED - | RTM | REVISED - | |
| DATE - | 2/14/2024 | REVISED - | |

| | | | | |
|------------------------------------|---------------------------|------------------|------------------------|--------------------|
| F.A.P./ F.A.U. 345A/ 2340 | SECTION 19-00187-00-CH | COUNTY KANE | TOTAL SHEETS 115 | SHEET NO. 46 |
| CONTRACT NO. 61J28 | | | | |
| FED. ROAD DIST. NO. 1 | ILLINOIS | FED. AID PROJECT | | |



SCHEDULE OF SIGNS

| | | | | | |
|----|--|---|----|--|----------------|
| 1 | | M3-1(O)-2412 | 17 | | M4-10R-4818 |
| 2 | | M3-3(O)-2412 | 18 | | R11-3A(O)-6030 |
| 3 | | SPECIAL 5" BLACK LETTERS ON FLUORESCENT ORANGE BACKGROUND | 19 | | M1-4-2424 |
| 4 | | M4-9(O)-3024 | | | |
| 5 | | M4-9L(O)-3024 | | | |
| 6 | | M4-9R(O)-3024 | | | |
| 7 | | M4-9L(O)-3024 | | | |
| 8 | | M4-9R(O)-3024 | | | |
| 9 | | M4-8A(O)-2418 | | | |
| 10 | | SPECIAL-4836 4" BLACK LETTERS ON FLUORESCENT ORANGE BACKGROUND | | | |
| 11 | | SPECIAL-4836 4" BLACK LETTERS ON FLUORESCENT ORANGE BACKGROUND | | | |
| 12 | | W20-3(O)-4848 | | | |
| 13 | | W20-2(O)-4848 | | | |
| 14 | | W20-3(O)-4848 | | | |
| 15 | | R11-4(O)-6030 | | | |
| 16 | | SPECIAL-3636 BLACK IN FLUORESCENT ORANGE | | | |

LEGEND

- DETOUR ROUTE
- ROAD CLOSURE
- SIGNALIZED INTERSECTION
- CONSTRUCTION WARNING SIGN WITH AMBER FLASHING LIGHT, NUMBER DENOTES TYPE
- M4-9 SERIES DETOUR SIGN WITH ROAD NAME AND DIRECTION PLATES, NUMBER DENOTES TYPE
- OTHER DETOUR SIGNS, NUMBER DENOTES TYPE

NOTES

- DETOUR SIGNING SHALL BE INCLUDED IN THE COST OF "TRAFFIC CONTROL AND PROTECTION, (SPECIAL)"
- ALL DETOUR SIGN SPACING SHALL BE IN ACCORDANCE WITH IDOT DISTRICT 1 DETAIL TC-21.
- THE PAY ITEM "TEMPORARY TRAFFIC SIGNAL TIMING" SHALL BE INCLUDED FOR EACH SIGNALIZED INTERSECTIONS ALONG THE PROPOSED DETOUR ROUTE.

MODEL: Default
FILE NAME: C:\303b324 - US Rte 20 Roundabout\CAD\Sheets\08_mct_detour.dgn

Bravo Company
ENGINEERING

| | | | |
|------------|-----------|-----------|--|
| DESIGNED - | TGB | REVISED - | |
| DRAWN - | KEH | REVISED - | |
| CHECKED - | RTM | REVISED - | |
| DATE | 2/14/2024 | REVISED - | |

STATE OF ILLINOIS
DEPARTMENT OF TRANSPORTATION

DETOUR PLAN
STAGE 2

SHEET 3 OF 3 SHEETS STA. TO STA.

| | | | | |
|------------------------------------|---------------------------|------------------|------------------------|--------------------|
| F.A.P./ F.A.U. 345A/ 2340 | SECTION 19-00187-00-CH | COUNTY KANE | TOTAL SHEETS 115 | SHEET NO. 47 |
| CONTRACT NO. 61J28 | | | | |
| FED. ROAD DIST. NO. 1 | ILLINOIS | FED. AID PROJECT | | |